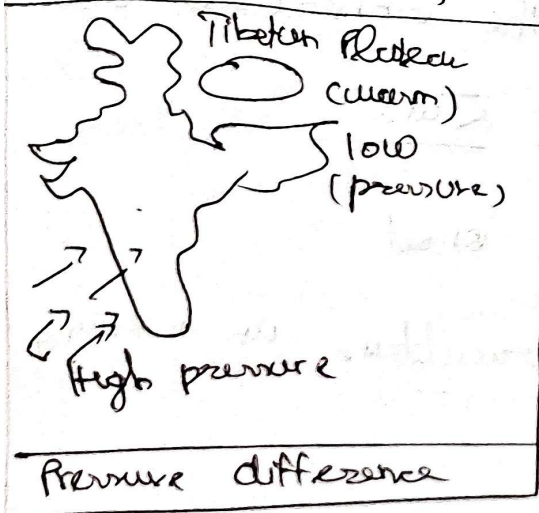


Discuss various factors influencing onset of monsoon.
 Analyse consequences of early & delayed onset

India is a monsoon dependent country and the South-west monsoon brings more than 75% of total rainfall. Yet, the spatial spread and time are unpredictable

factors influencing onset of monsoons.



① Temperature and Pressure variations between the land and sea have influenced the

onset of monsoon.

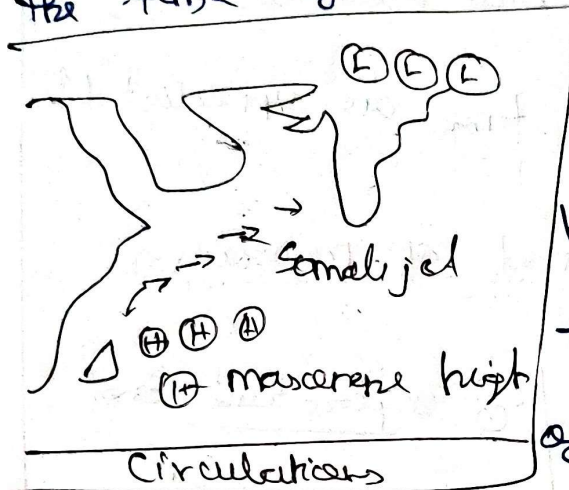
② Movement of the monsoon trough over the subcontinent enables the onset of monsoon.



③ Jet streams such as the easterly and westerly jets influence the onset of monsoon.

④ Global circulations such as the Masarene High and Somali jets influence

the time of the monsoon.



this year, the monsoon has onset weeks before the scheduled onset of June 1.

Consequences of early onset.

Favourable 1. Starts agriculture in country

the Kharif crops.

2. Addresses the heat and water

stress caused by rising temperatures

3. Water availability in the reservoirs.

Unfavourable 1. Early onset may lead to

extended breaks in monsoon.

2. Urban flooding in cities such as

Mumbai and Bengaluru.

consequences of delayed onset.

- ① monsoon droughts can occur due to delay in rainfall.
- ② Extends the drought and heat stress
- ③ Adversely affects the agricultural output and can increase food inflation.
- ④ Impact on wild animals such as elephants and human-wildlife conflict increases.
- ⑤ Intersette water clashes can happen
- ⑥ Forest fire.

Solutions
effects such as Bihar Forest Systems
and Atmospheric Research test bed to analyse
means have to be expanded to
track the monsoon and its course.