

UPSC Daily Current Affairs| One Liners 13-02-2026

One Liners 13-02-2026

Geography

Vidarbha - India's Mineral Hub & Steel Ambitions

- **Vidarbha Concentration** - 75% of Maharashtra's mineral resources are located in the Vidarbha region.
- **High-Grade Iron Ore** - Gadchiroli hosts 65-grade iron ore, among the world's finest quality.
- **Other Iron Ore Deposits** - Jamshedpur area contains 55-grade iron ore.
- **Coal Resources** - Significant coal deposits support energy needs, with Western Coalfields Ltd (WCL) headquartered in the region

Social Issues

India's Mental Health Burden

- **High Prevalence** - Accounts for nearly one-third of global suicides, alongside widespread depression and addiction.
- **Youth Impact** - Suicide is the leading cause of death among 15-29-year-olds.
- **Economic Cost** - WHO estimates a \$1.03 trillion loss between 2012-2030 due to mental health issues.
- **Treatment Gap** - 70-92% of cases remain untreated because of stigma and shortage of professionals.
- **Workforce Shortage** - Only 0.75 psychiatrists per lakh people, far below WHO's recommended 3 per lakh.
- **Emerging Challenge** - Rising digital addiction highlighted in the Economic Survey.

Polity & Governance

Atal Innovation Mission (AIM) SUMVAAD

- India's Flagship Conclave for the National Incubation Ecosystem.
- **Organised by** - Atal Innovation Mission, under NITI Aayog.
- **Objectives** - To align policy intent, institutional capacity, and ecosystem partnerships towards building a high-quality, outcomes-driven incubation ecosystem for India.
- **Highlights** -
 - It marked the celebration of over 100 AIM-supported incubators,
 - Launch of the Youth Co:Lab National Innovation Challenge 2026,
 - Announcement of the National Incubator Assessment Framework Indicators, and
 - National Incubation Awards - recognising excellence and impact across India's incubation ecosystem.
- **Significance** - It deepens the entire innovation ecosystem in furtherance of the PM's vision of Viksit Bharat.

Economy

Promotion of Jute Industry

- Jute is a *biodegradable and sustainable product*.
- **Schemes** - Market Development & Promotion Scheme and the Jute Diversification Scheme, implemented by National Jute Development Program (NJDG).
- **Legal basis** -
 - *Jute Packaging Materials (Compulsory Use in Packaging Commodities) Act, 1987*,
 - It ensures a minimum percentage of food grains and sugar is packaged in jute material.
 - **MSP** - Incentivize jute farmers by the Minimum Support Price for jute.
- **Key challenges** -
 - Obsolete machinery and technology,
 - Competition with synthetic fibres,
 - Average quality & fluctuation in price of raw jute.

PM Mega Integrated Textile Region and Apparel (PM MITRA) Parks

- **Location** - Tamil Nadu (Virudhnagar), Telangana (Warangal), Gujarat (Navasari), Karnataka (Kalaburagi), Madhya Pradesh (Dhar), Uttar Pradesh (Lucknow) and Maharashtra (Amravati).
- **Objective** - To generate employment of 3 lakhs (1 lakh direct and 2 lakh in-direct employment) with an estimated investment of Rs 10,000/-cr per park.

Agriculture

Rediscovering the Virtues of Bamboo

- Bamboo is a fast-growing, versatile plant promoted under the National Bamboo Mission for ecological, economic, and nutritional benefits.
- **Traditional uses** - Food, construction, and household items;
- **Modern applications** - Sustainable plastic alternatives and ethanol production to clothing, furniture, and other products.
- **Climate & geography** - It thrives in tropical, humid regions and is widely grown in states like Assam, Tripura, Mizoram, Odisha, Andhra Pradesh, Karnataka, Kerala, and Tamil Nadu.



National Bamboo Mission 2025

- Centrally Sponsored Scheme (CSS)
- **Nodal Ministry** - Ministry of Agriculture & Farmers Welfare.
- **Objectives** - To expand bamboo cultivation, strengthen industry linkages, and reduce import dependence.
- **Cultivation focus** - Promotes bamboo plantations on non-forest lands such as *farms, homesteads, community lands, and canal borders*.
- **Exports** - Bamboo products like textiles, jewellery, and mirrors are exported to countries including the *US, Denmark, and Nigeria*.
- **Global Rank** - India is among the top 3 bamboo exporters worldwide, alongside China and Vietnam, generating millions in revenue.

Environment

Birth of New 5 cubs

- *Namibian cheetah Aasha* gave birth to five cubs at *Kuno National Park, Madhya Pradesh*.
- **Populace** - It raises India's cheetah population to 35 (24 Indian-born cubs + 11 translocated adults).
- **Significance** - It mark a major success for Project Cheetah, showing successful adaptation and breeding.

Peregrine Falcon (Falco Peregrinus)



● **Peregrine falcons** are **the world's fastest animal** – they can dive-bomb prey at **320 kms an hour**. On coasts, deserts and peaks worldwide, they became endangered in the 1970s – pesticides, particularly **DDT**, were **poisoning their diet and eggs**. Peregrines crashed by 90%. **The US banned DDT** while scientists started **captive breeding** – chicks hatched in labs were protected until they could fly. Today, the falcon enjoys its Latin name '**peregrin**' – '**traveller**' – **happily roaming the world**

Avian Flu

A bird flu (H5N1 virus) outbreak in Tamil Nadu has raised concerns in Andhra Pradesh, particularly due to the movement of migratory birds.

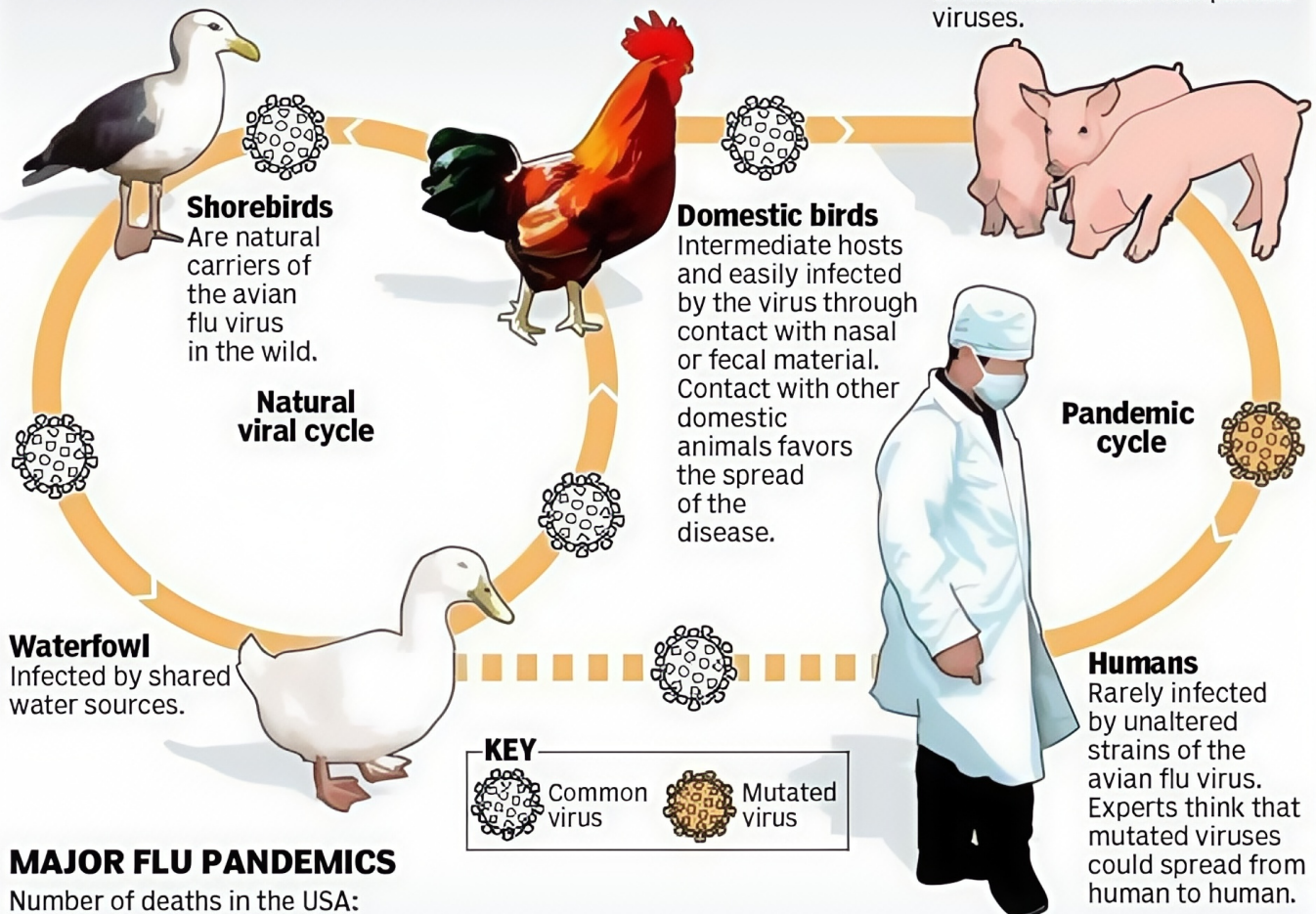
- **Reason** - Over 10 lakh migratory birds visit Pulicat Lake and other wetlands in Andhra Pradesh annually.
- Species like crows, egrets, pelicans, and herons move across states, potentially spreading the virus.

THE NEXT PANDEMIC?

Although the H5N1 virus, known as the avian flu virus, does not usually infect humans, new mutated forms of this virus could represent a realistic risk of a flu pandemic, experts say.

Mammals

Intermediate hosts. Hogs can also be infected by human flu virus, which increases the risk of mutated human compatible viruses.



MAJOR FLU PANDEMICS

Number of deaths in the USA:

Spanish Flu (1918)		500,000
Asian Flu (1957)	 70,000	
Honk Kong Flu (1968)	 34,000	



Global killer: The [A(H1N1)] strain of the flu virus, commonly known as the "Spanish Influenza" killed more than 50 million people worldwide.



SHANKAR
IAS PARLIAMENT
Information is Empowering