

SDG-National Indicator Framework Progress Report, 2025

Prelims: Current events of National and International Importance

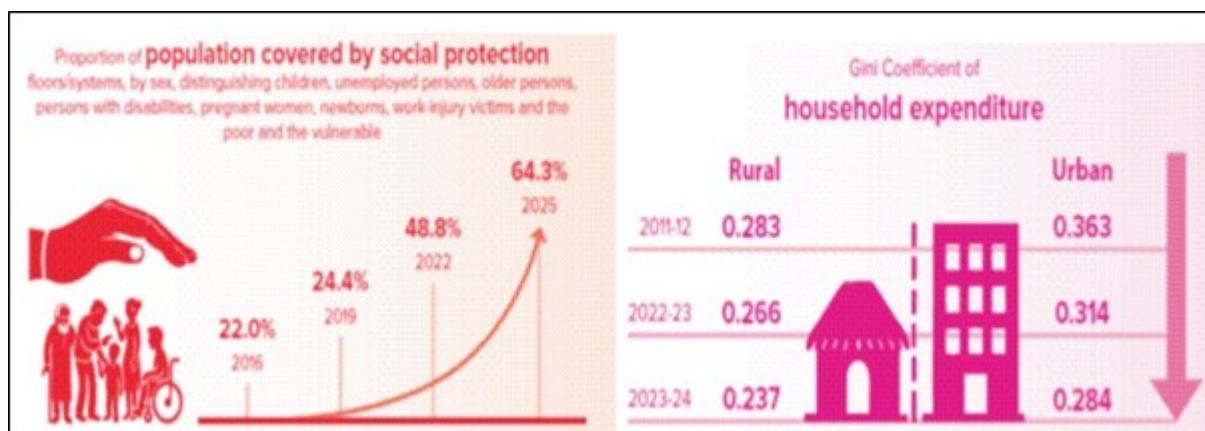
Why in News?

Recently, on the occasion of 19th Statistics Day (29th June), the Ministry of Statistics and Programme Implementation released various publications on Sustainable Development Goals (SDGs).

- **Released by** - Ministry of Statistics and Programme Implementation.
- **Objectives** - To present the time series data on the SDG national indicators, which will be instrumental in monitoring the national-level progress of the 17 SDGs.
- **4 mains sections**
 - Overview summary & Executive summary
 - Data Snapshots
 - Metadata
 - Data Tables
- **Expansion in social security coverage** - The population covered by social protection systems/floors has increased to 64.3% in 2025.
- **Improved agricultural productivity & income per worker** - The Gross Value Added in agriculture per worker (in Rs.) has increased from 61,247 in 2015-16 to 94,110 in 2024-25.
- **Universal safe water access in rural India** - Percentage of population using an improved drinking water source in rural areas has increased to 99.62% in 2024-25.
- **Cleaner and sustainable energy generation** - The renewable energy share in the total installed electricity generation has increased to 22.13% in 2024-25.
- **Waste management infrastructure** - Number of waste recycling plant installed have increased to 3036 in 2024- 25.
- **Growth in entrepreneurship** - The number of start-ups recognised under start-up India have increased to 34,293 in 2024.
- **Reduced income inequality** - The Gini coefficient of household expenditure has decreased in rural areas and in urban areas.

The **Gini index, or Gini coefficient**, measures income inequality in nations by determining how income is distributed across their populations.

- **Low-carbon economy** – The reduction in emissions intensity of GDP in 2020 over 2005 level is 36%.
- **Rise in digital connectivity** – The total number of internet subscriptions (in millions) has increased to 954.40 in 2024.
- **Rise in the country's forest areas** – The forest cover a percentage of total geographical area has increased from 21.34% in 2015 to 21.76% in 2023.



Reference

[PIB| SDG National Indicator Framework Progress Report, 2025](#)