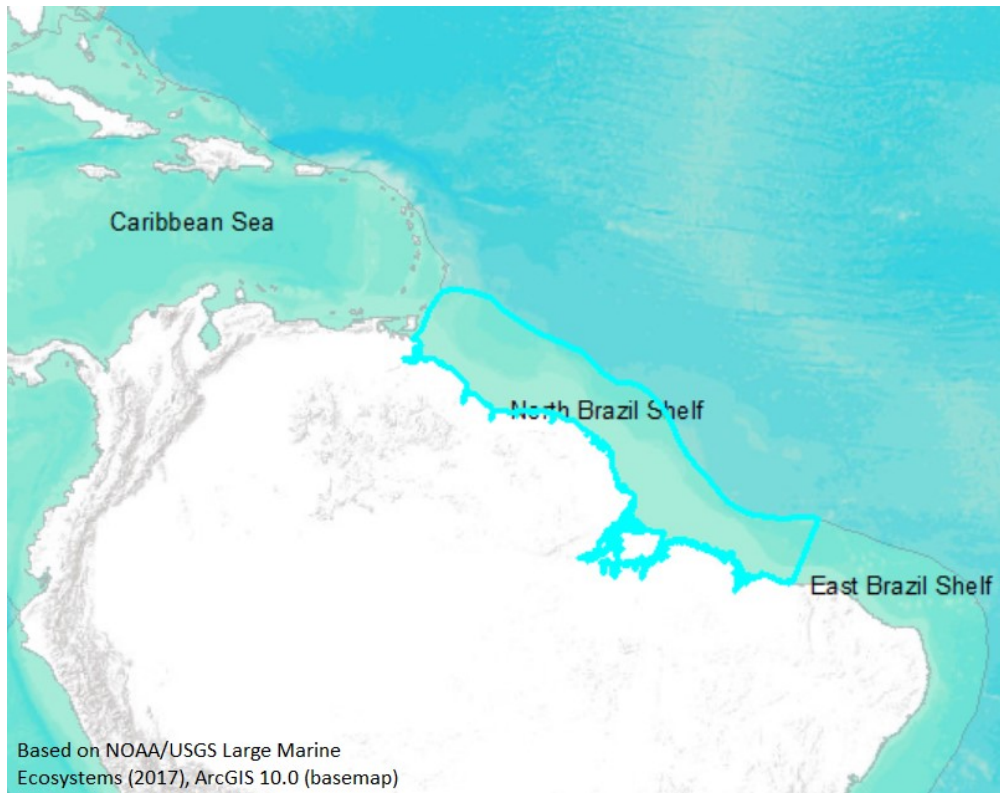


Ocean Coordination Mechanism (OCM)

Why in News?

Caribbean and North Brazil shelves (Large Marine Ecosystem) are recently brought under the initiative, Ocean Coordination Mechanism (OCM).

- It is a collaborative framework to ensure a more inclusive and sustainable approach to **ocean conservation** in the **wider caribbean region**.
- **Announced by** - The Intergovernmental Oceanographic Commission of the United Nations Educational, Scientific and Cultural Organization (UNESCO).
- It was conceived under the 10-year CLME+ Strategic Action Program (CLME+ SAP), endorsed by countries in the Wider Caribbean in 2014.
- **Implemented by** - IOC Sub commission for the Caribbean and Adjacent Regions (IOCARIBE), UNESCO's agency.
- **Covered areas** - Caribbean Sea and North Brazil shelves.
- **Purpose** - Foster collaboration among countries, intergovernmental organizations (IGOs), and key stakeholders.
- Promotes blue carbon projects, which use coastal ecosystems for carbon storage, benefiting both the environment and local communities.
- Coordinate and streamline actions such as sustainable fisheries, ecosystem restoration, pollution control, blue carbon development, marine spatial planning, and establishing marine protected areas.
- **Funding** - It has secured an initial \$15 million investment from the Global Environment Facility through the UNDP/GEF PROCARIBE+ Project for the period 2024-2028.
- The initiative has also benefited from a substantial co-financing total of \$126.02 million facilitated by the GEF.



Caribbean Sea	North Brazil Shelf
<ul style="list-style-type: none"> • The Caribbean Sea is a body of water adjacent to the Atlantic Ocean, southeast of the Gulf of Mexico. 	<ul style="list-style-type: none"> • The "North Brazil Shelf" refers to a large marine ecosystem (LME) located off the northeastern coast of South America.
<ul style="list-style-type: none"> • Bordered by - Venezuela, Colombia and Panama to the south, • Central American countries (Costa Rica, Nicaragua, Guatemala, Honduras and Belize) on the west, • Greater Antilles (Cuba, Jamaica, the Dominican Republic and Puerto Rico) on the north and • Lesser Antilles on the east. 	<ul style="list-style-type: none"> • Extending from the Caribbean Sea boundary near Venezuela to the Parnaiba River estuary in Brazil.
<ul style="list-style-type: none"> • The deepest site in this sea is the Cayman Trench between Cuba and Jamaica 	<ul style="list-style-type: none"> • It's characterized by a wide continental shelf significantly influenced by the Amazon River's discharge and the North Brazil Current.
<ul style="list-style-type: none"> • The Wider Caribbean Region includes 35 states and territories that border 2 interconnected watersheds- the <u>Gulf of Mexico and the Caribbean Sea.</u> 	<ul style="list-style-type: none"> • It includes 6 countries, highly productive region with diverse marine life including numerous fish species and shrimp populations.

Reference

[Down to Earth | Ocean Coordination Mechanism \(OCM\)](#)