

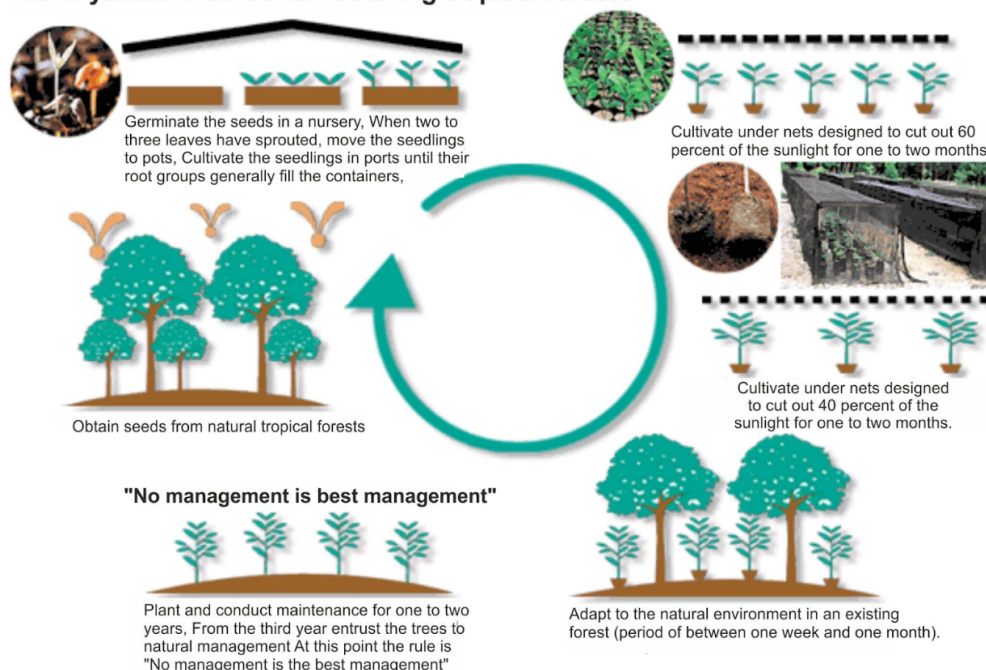
## Miyawaki Technique

### Why in News?

*In preparation for Mahakumbh 2025, dense forests have been developed at various locations across Prayagraj, to ensure pure air and a healthy atmosphere for the millions of devotees expected to visit the city.*

- **Miyawaki Forestry** – An ecological engineering technique of afforestation, involves planting a diverse range of native tree species in a small area, which then grow into a dense, multilayered forest.
- **Developed by** – *Japanese botanist Akira Miyawaki* in 1970s.
- **Aim** – To create a self-sustaining forest, with a high level of biodiversity and to restore degraded land and combat climate change.
- **Process** – It involves planting trees and shrubs close to one another to accelerate their growth.
- Plants grow 10 times faster with this technique, making it a practical solution for urban areas.
- A completely maintenance-free, wild and native forest after the 1<sup>st</sup> 3 years.
- **4 steps of Miyawaki forestry technique**
  - Initial survey of the locality
  - Collection of the seeds
  - Preparation of planting sites
  - Planting

### The Miyawaki method for restoring tropical forests



*Miyawaki Technique is also known as **Pot Plantation Method**.*

- **Benefits** – Up to 30 times more dense than conventional plantations.
- Up to 30 times better noise and dust reduction.
- Up to 30 times better Carbon-dioxide absorption as compared to a monoculture plantation.
- It is highly effective in the establishment of urban forests as well as converting unproductive wastelands into ecological and socially beneficial productive lands

*The Prayagraj Municipal Corporation has utilized the Japanese Miyawaki technique over the past 2 years to establish multiple oxygen banks, which have now transformed into lush green forests. It also contributed to improving air quality, playing a crucial role in environmental conservation.*

## Reference

[PIB| Green Mahakumbh using Miyawaki Technique](#)

