

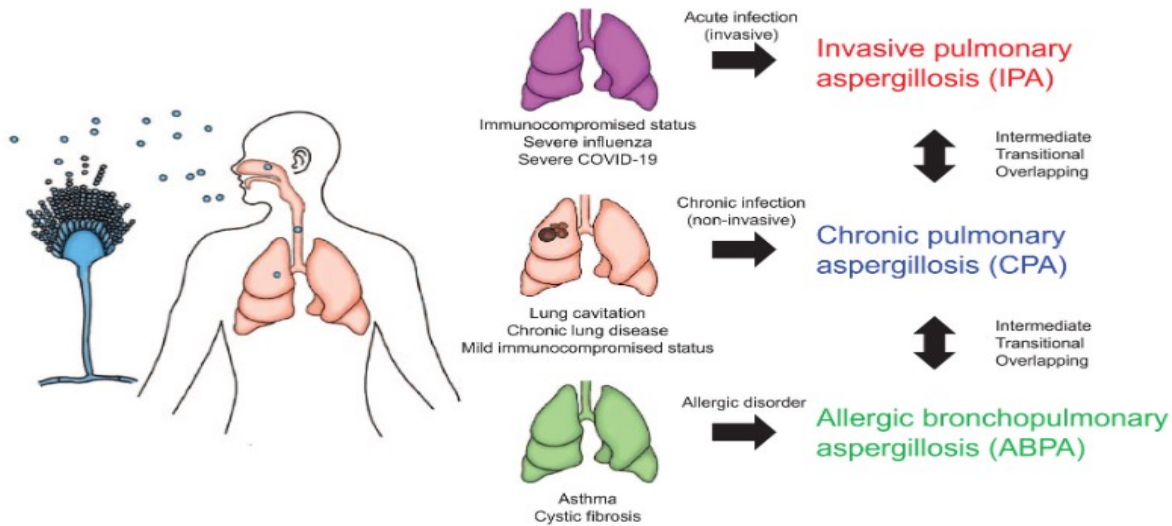
## Chronic Pulmonary Aspergillosis (CPA)

### Why in News?

*Recently, a new research has identified a Chronic Pulmonary Aspergillosis (CPA) in tuberculosis survivors among Assam's tea plantation workers.*

- **CPA** - It is a serious and **long-term fungal infection** that affects the lungs.
- **Caused by** - *Aspergillus fumigatus*, a fungus that strikes individuals with immunodeficiency.
- **Conditions** - It is a chronic lung disease that occurs commonly in **pre-existing lung cavities**.
- Poverty, poor nutrition, kitchen smoke, close contact with smear-positive patients and living in congested environments.
- **Risk factors** - It mostly occurs in,
  - Post-Tuberculosis (TB) or active TB patients.
  - People with weakened immune system or
  - Lung diseases.
- **Transmission** - It is not a contagious disease.
- It can't be passed from person to person.

*According to the National Tuberculosis (TB) Prevalence Survey 2019-2021, TB has been a major public health issue across the tea belts in Assam's Brahmaputra and Barak valleys, afflicting 217 per 1,00,000 population.*



- **Incubation period** - 3 months or more.
- **Symptoms** - Chronic cough, haemoptysis (coughing blood), weight loss or fatigue and other respiratory.
- **Impact** - It causes severe bleeding in the lungs, which lead to be fatal.
- **Treatment** - It vary depending on the severity of symptoms and any underlying conditions.

*Using advanced serological testing and radiological imaging, the researchers recorded a CPA prevalence of 17.18% in the year-long study and seropositivity was 18.5% in active TB patients but spiked to 48.9% in those who had completed treatment.*

## References

1. [The Hindu| Assam's tea workers prone to Chronic Pulmonary Aspergillosis \(CPA\)](#)
2. [Healthline| Chronic Pulmonary Aspergillosis \(CPA\)](#)